

# Wireless Modem Setup

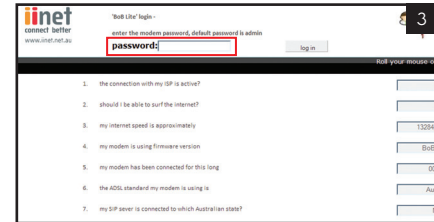
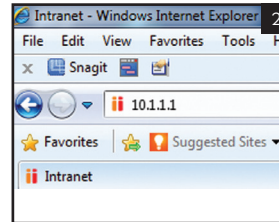
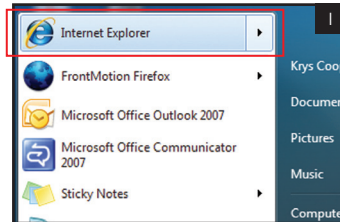
Step

The following information provides an easy, step-by-step guide to setting up your wireless network. By now you've used the **Quick Installation Guide** to connect your modem to a computer and the Internet. The next step is to set up your modem to allow other devices to connect wirelessly.

Before starting Wireless Setup, please ensure:

- Your modem is switched on.
- The Ethernet cable is plugged in correctly into both your modem and computer.
- You are able to browse to a website.

1. Click on your preferred browser.
2. In your browser, type in **10.1.1.1** into the URL bar to browse to your modem.
3. Once loaded you'll see the modem login page. Enter your modem password into the password field (default password is "**admin**") and press enter.

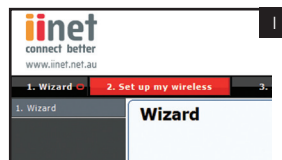


# Step 2

1. Click on menu option 2 - **Set up my wireless**

2. On the **Set up my wireless** page follow the steps below.

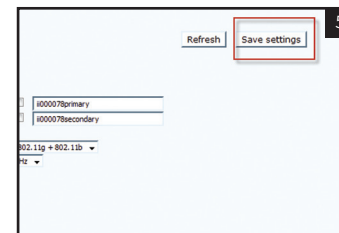
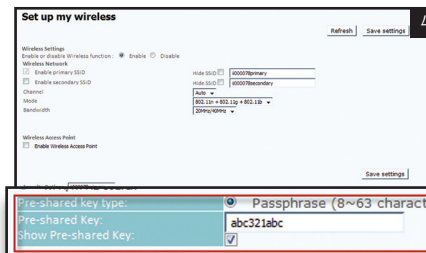
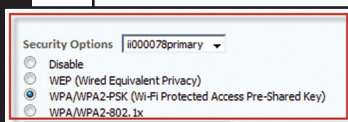
- Enable the Wireless function by ticking the **enable** option. Already enabled by default.
- Enable the primary SSiD by ticking the **Enable primary SSiD** option. Already enabled by default.
- Make a note of the name of the SSID. This will identify your new wireless network to the devices you attempt to connect to your network.



3. Under **Security Options** select the **WPA/WPA2-PSK** option.

4. Under **Security Options**, in the **Pre-shared key** input box, enter a password for your new wireless connection. **Remember** – the password must be a minimum of 8 characters. *It is recommended you use a combination of numbers, letters, upper and lower case characters.*

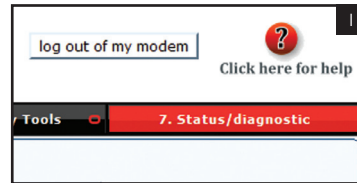
5. Wireless settings in your modem are now configured. Click the **Save Settings** button towards the top of the page to save these permanently.



Step

3

1. To confirm your wireless settings are saved, click menu option 7 - **Status/diagnostics**.
2. Under the heading wireless please ensure **Wireless:** and **Wireless Security:** are enabled.



### 8. Status 2

You can use the Status screen to see the connection status for the router's WAN/LAN interfaces, firmware and hardware version n well as information on all DHCP client PCs currently connected to your network.

- **Current Time:** 1970default.htm1default.htm1 - 0:54:33
- **UPTIME:** 0:0:00:00

INTERNET	GATEWAY	WIRELESS
ETH WAN: Physical DISCONNECTED	IP Address: 10.1.1.1 Subnet Mask: 255.255.255.0 DHCP Server: Enabled Firewall: Enabled UPnP: Enabled Wireless: Enabled	<b>Wireless: Enabled</b> Channel: AUTO Wireless Devices: 0 <b>Virtual AP1 SSID: ii000078primary</b> <b>Wireless Security: Disabled</b> Virtual AP2 SSID: ii000078secondary Security: Disabled

3. Your modem is now ready for wireless connections. The next step is to configure any devices you wish to connect to the wireless network and the internet.
4. Please log out of your modem by clicking 'log out of my modem' near the top right side of your web browser.

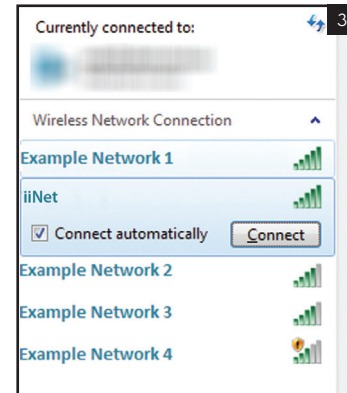
# Wireless Computer Setup - Windows 7

Step

1

You should have now enabled the wireless (Wi-Fi) connection of your modem. The following easy step-by-step instructions will help you connect your computer to your modem.

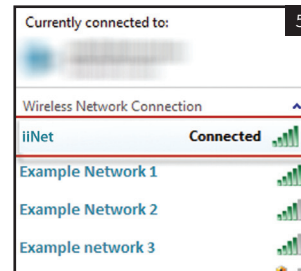
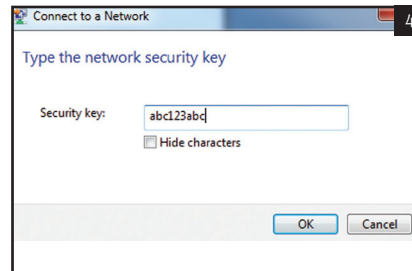
1. Click on the **Wireless Network** icon in the system tray of your computer.
2. A menu will appear with the wireless networks currently in range. Look for the name of your newly configured wireless network and click on it. In this case it's **iiNet**.
3. Ensure the **Connect Automatically** option is ticked and then click on the **Connect** button.



Step

continued

4. Next you'll be required to enter your newly created **Pre-shared key** (this is the password you entered into your modem while configuring its wireless settings), then press ok.
5. Once loaded, click on the **Wireless Network** icon in your computers system tray to confirm the connection to your modem's wireless network.
6. Connection to your modem's wireless network is now complete. Try using a browser to surf to a website.

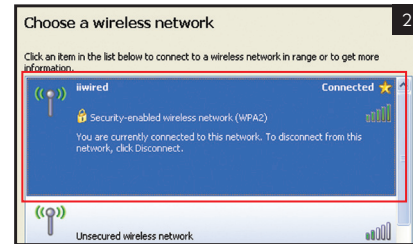
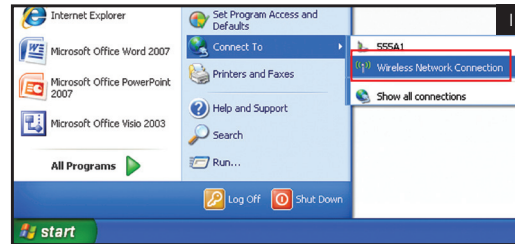


# Wireless Computer Setup - Windows XP

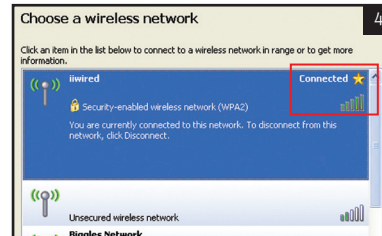
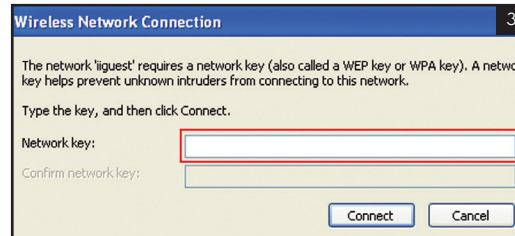
Step

1

1. Click on the **Start Menu**, open the **Connect To** menu item and select **Wireless Network Connection**.
2. Once the **Wireless Network** Connection window appears, select the wireless network you previously named (In this case it's **iiNet**). Next, click the **Connect** button.



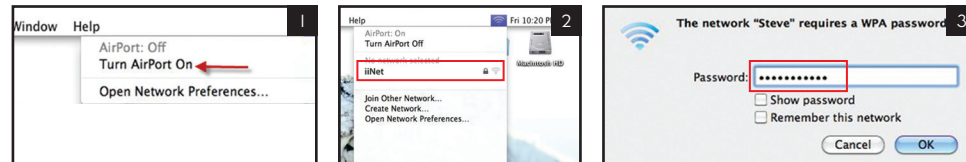
3. Next you'll be required to enter your newly created **Pre-shared** key (this is the password you entered into your modem while configuring its wireless settings), then press **Connect**.
4. In a few moments, your computer will have connected to the wireless network. To confirm a connection has been made, look for the **Connected** status.
5. Connection to your modem's wireless network is now complete. Try using a browser to surf to a website.



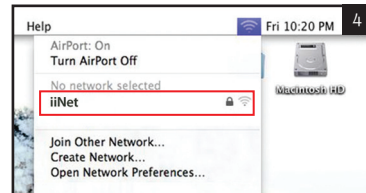
# Wireless Computer Setup - Mac OSX

Step

1. On the top menu bar, click the **AirPort** icon and select the **Turn AirPort On** option.
2. After a moment, your computer will list the available wireless networks. Select your previously named **wireless network**. In this case it's **iNet**.
3. Next you'll be required to enter your newly created **Pre-shared key** (this is the password you entered into your modem while configuring its wireless settings), then press **OK**.



4. Click the **AirPort** button and confirm you are connected to the newly created wireless network. Observe the **tick** next to the network name and the filled **wireless reception icon**.
5. Connection to your modem's wireless network is now complete. Try using a browser to surf to a website.



Wireless  
Setup  
Guide



BoB™  
LITE